

Taylor Yard G2 Water Quality Improvements Project

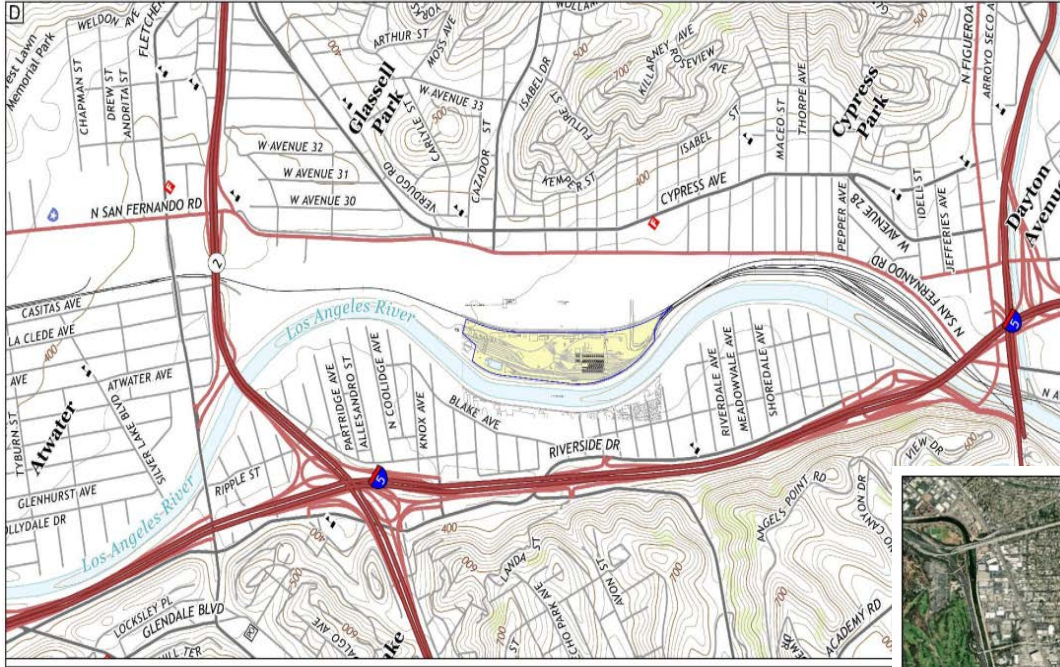
Presentation to
Proposition O Citizens Oversight Advisory
Committee (COAC)

By
LA Sanitation and Environment

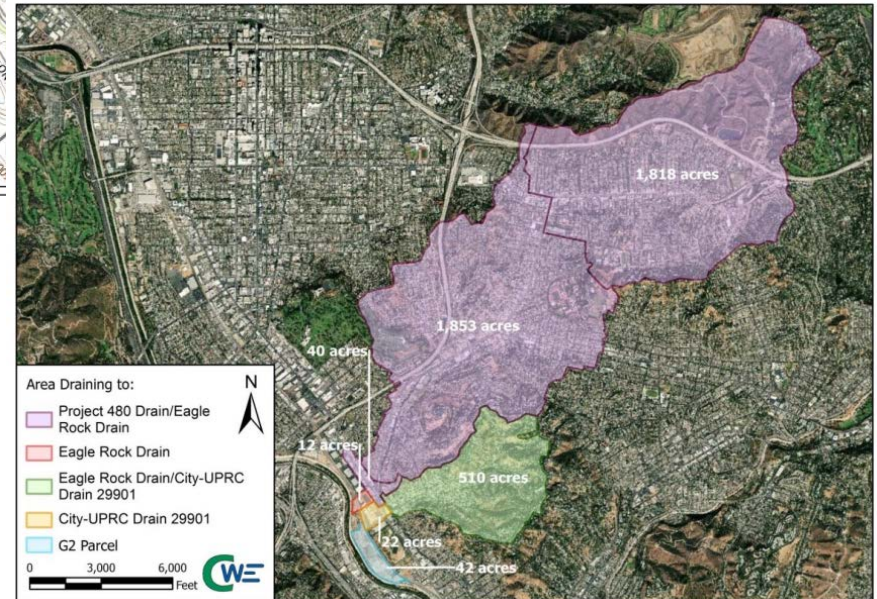
July 20, 2020



Vicinity & Drainage Map (CD2)



Stormwater is collected from a 4,297-acre watershed drainage area



Concept Summary

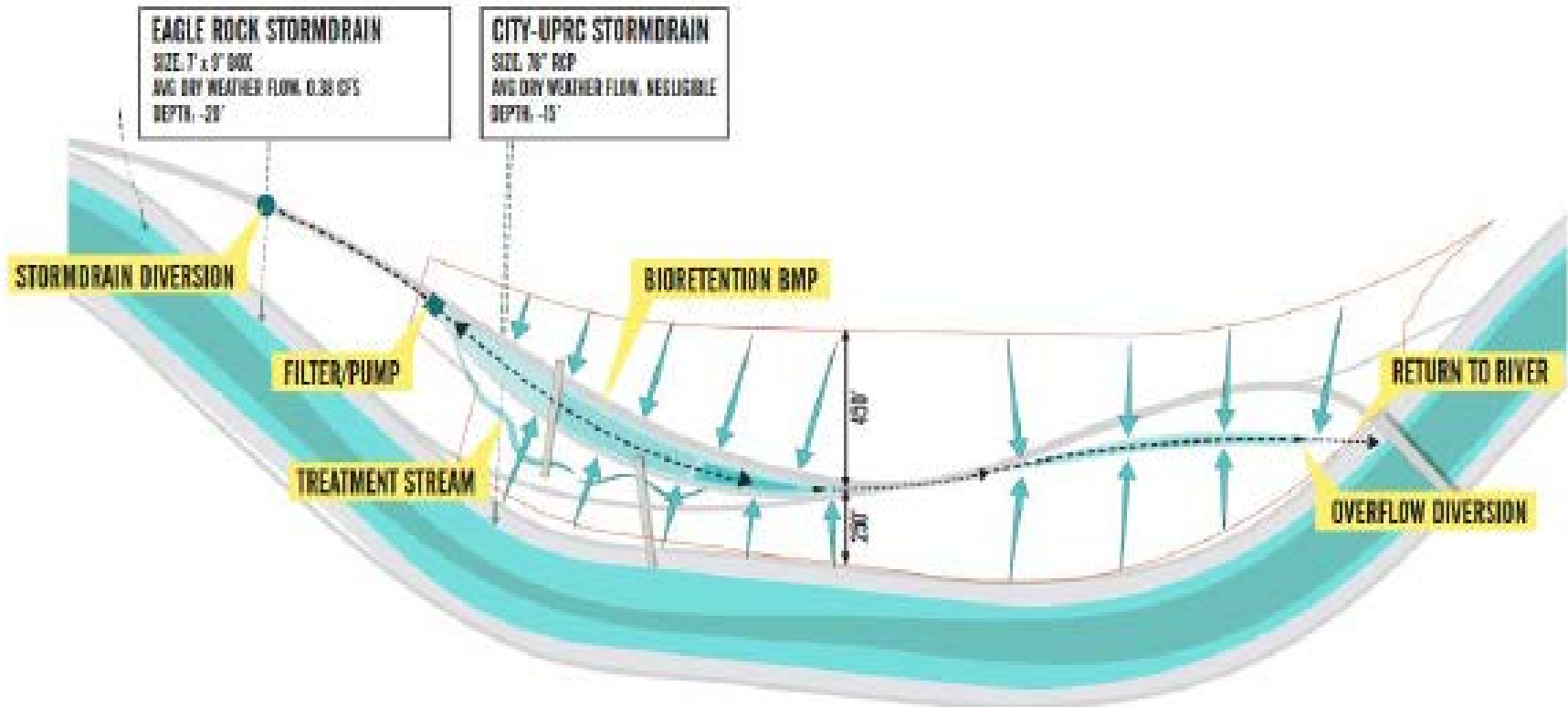
- Achieve multiple benefits: improve water quality, habitat restoration and TMDL compliance
- Proposed GSIs: capture and treat
- Proposed GSIs: Bioretention
- Estimated Project Cost: \$16.4 million
- Partners: LASAN, BOE, MRCA, RAP



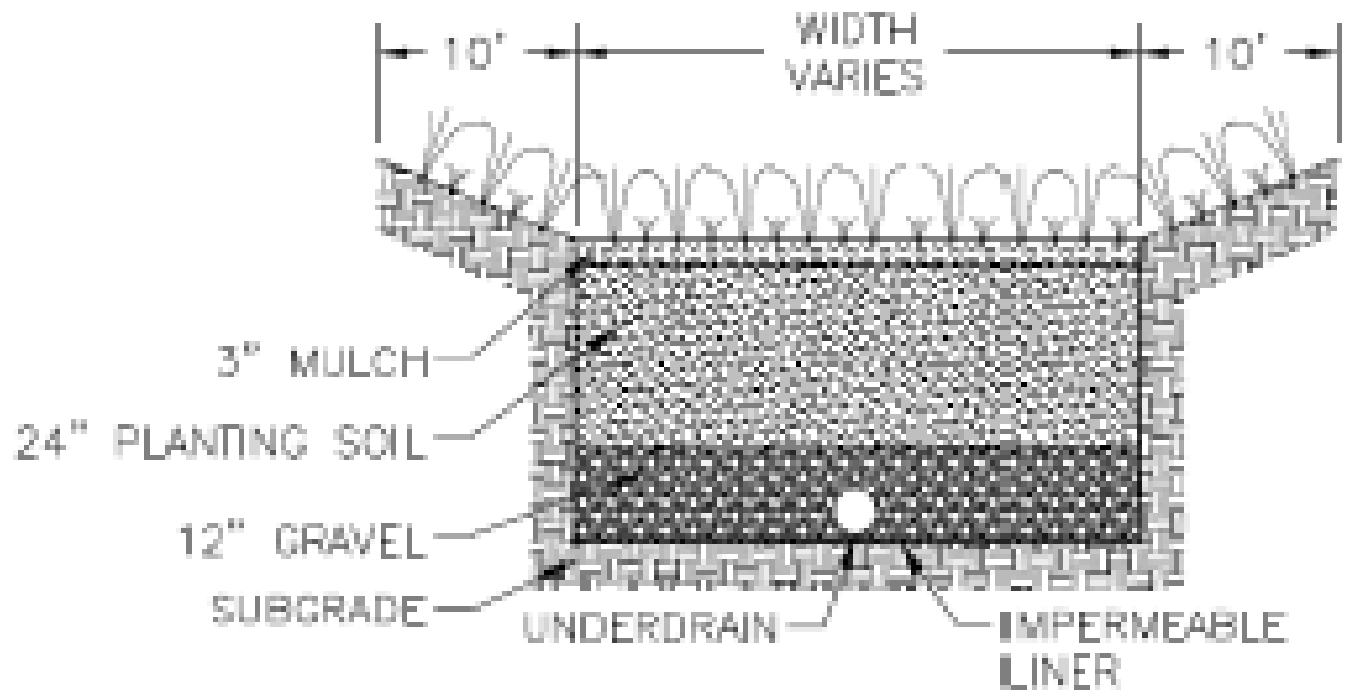
Conceptual Layout



Preliminary Design Concept of Bioretention BMP



Bioretention BMP



TYPICAL DETAIL
NOT TO SCALE



Project Summary & Estimated Benefits

Description	Drainage Area	Number of GSI Systems*	Annual Stormwater Capture
G2 parcel	4,297 acres	2	133 AF

* System consists of a pre-treatment BMP and bioretention BMP



Wet and Dry Weather Pollutant Load Reduction*

Constituent	Unit	Efficiency	Reduction	
			Wet Weather	Dry Weather
Total Trash	ft ³	100%	346	0
Nitrate	kg	50%	74.57	126 – 164
Total Copper	kg	90%	2.83	4 – 6
Total Lead	kg	90%	1.39	3 – 5
Total Zinc	kg	90%	16.52	21 – 27
Fecal Coliform	MPN	35%	1.98E+13	2.36E+13 – 3.07E+13
TSS	kg	90%	15,562	33,346 – 43,349

*Table shows the expected efficiency of the proposed BMP for the average annual capture of 133.4 ac-ft.



Project Schedule

Project Cost: \$16.4M

Phase	Duration
Planning	11 months
Engineering and Design	10 months
Bid & Award	4 months
Construction	11 months
Total	36 months



Project Funding

Project Cost: \$16.4M

- MRCA Grant: \$ 4.0M
- Prop O: \$12.4M

- Potential Grant: \$10.0M*

*Potential funding under State's Proposition 1, Storm Water Program. If received, it will offset Proposition O contribution.



Questions and Comments

Watershed Protection Program Los Angeles Sanitation and Environment

Wing Tam, PE
Proposition O Program Planning Manager
Assistant Division Manager
(213) 485-3985

Wing.Tam@LACity.org

